

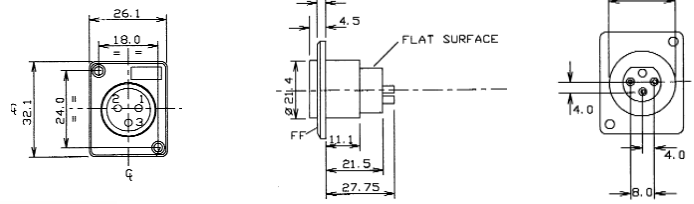
# CLIFF

## Series 1, 2, 3 & 4 Female Plastic 3 pin XLR Receptacles

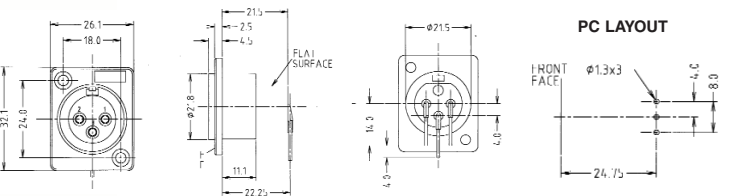
The **CLIFF**® range of professional standard chassis and PCB mounting XLR receptacles is designed for use in numerous applications including professional and consumer audio, broadcast and industrial uses. The design offers an economical alternative to higher priced metal XLR connectors. Our products are manufactured to strict quality and performance standards. These components feature a tough nylon construction with special low noise machined or spring action wiping contacts for both hand solder, horizontal or vertical PCB mounting.



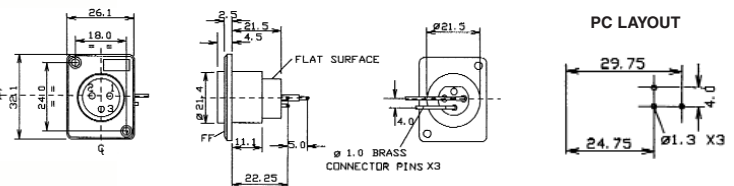
ACF 3 Pin chassis mounting Female XLR with counter sunk mounting holes for M3 screw fixing. XACF has non counter sunk mounting holes for self-tap screw fixing. Nickel Silver plated Brass contacts.  
**ACF (CP3001)**  
**XACF (CP30012)**



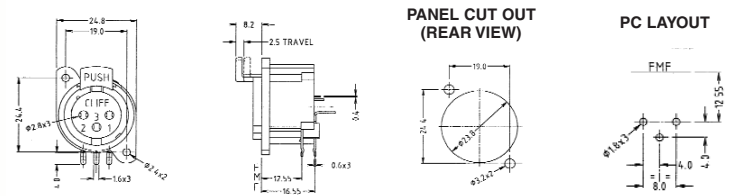
ACF / PC 3 Pin right angle PCB mounting Female XLR with counter sunk mounting holes for M3 screw fixing. XACF / PC has non counter sunk mounting holes for self-tap screw fixing. Nickel Silver plated Brass contacts.  
**ACF-PC (CP30015)**  
**XACF-PC (CP300151)**



XACFR / PC 3 Pin horizontal lateral right PCB mounting Female XLR with self-tap screw fixing. Vertical PCB mounting versions ACF / PCS and XACF / PCS available. Nickel Silver plated Brass contacts.  
**XACFR / PC (CP30017)**  
**ACF / PCS (CP300125)**  
**XACF / PCS (CP30014)**



XNACF2 - 3 Pin right angle PCB mounting Female XLR with latch. Vertical PCB mounting version XNACF2V. Nickel Silver or Gold plated PbRz contacts available.  
**XNACF2 (CP300281)**  
**XNACF2G (CP300281G)**  
**XNACF2V (CP300283)**  
**XNACF2VG (CP300283G)**



**Cliff Electronic Components, Ltd.**  
76 Holmethorpe Avenue, Holmethorpe Ind. Est.  
Redhill, Surrey RH1 2PF. England  
**Tel: +44 (0) 1737 771375**  
**Fax: +44 (0) 1737 766012**  
**Email: sales@cliffuk.co.uk**



Visit us online at:

[www.cliffuk.co.uk](http://www.cliffuk.co.uk)

